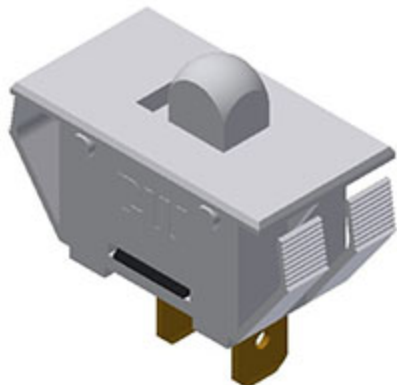


**CW INDUSTRIES**

130 James Way

Southampton, PA 18966

Phone: 215-355-7080 • Fax: 215-355-1088

Email: [info@cwind.com](mailto:info@cwind.com) • Website: <http://www.cwind.com>**Item # G-2011-0041, 2000 Series Power Slide Switches**
[Check Distributor Stock](#) · [Specifications](#) · [Materials](#) · [Operating Standards](#)
**Check Distributor Stock**

Check Distributor Stock	<a href="#">DIGI-KEY</a>
-------------------------	--------------------------

**Specifications**

Circuitry	SPST
Switch Function	ON-OFF
Electrical Ratings <sup>1</sup>	4 A @ 250 VAC 8 A @ 125 VAC
Actuator Color	White
Housing Color	White
C1	N
Mounting Polarization	Yes
Actuator Legend	None
Illumination	Non Illuminated
Terminal	0.250" Wide
Listing Agency (Consult drawing or factory for specific rating) <sup>2</sup>	 Listed Agencies
Compliance	 

<sup>1</sup> Additional ratings may be available, specify your unique requirements.<sup>2</sup> Due to ongoing advancements, additional agency certifications may be available, contact us for more information.**Materials**

Rocker Knob	Nylon 94V-2
Housing	Nylon 94V-2
Terminal & Moving Contact	Copper Copper Alloy Silver Plated

**Mounting**

No hardware or tools needed; self locks into a 0.550" (13.97 mm) x 1.125" (28.58 mm) panel cutout.  
Acceptable panel thickness range from 0.025" (0.64 mm) to 0.180" (4.57 mm).

**CAUTION:** Burr direction must be away from the direction of insertion.

**Operating Standards****Endurance:**

100,000 cycles, no load, minimum

25,000 cycles at rated load minimum

**Contact Resistance:**

Less than 0.01  $\Omega$  at 10 mA

**Operating Temperature:**

From 65°C - 125°C maximum

**High Voltage Dielectric Withstanding Voltage:**

2,500 V, 60 Hz for 1 minute between mounting surface and circuit connections (min.)

**Relative Humidity:**

Insulation resistance > 10<sup>3</sup> M $\Omega$  after 100 hours at 95% R.H. and 50°C followed by 1 hour dry at ambient room conditions

**Operating Standards** described herein are general specifications that vary depending on the switch construction specified and end application. Contact us for specifications for specific models. Specifications subject to change without notice.